

Piella

Viola

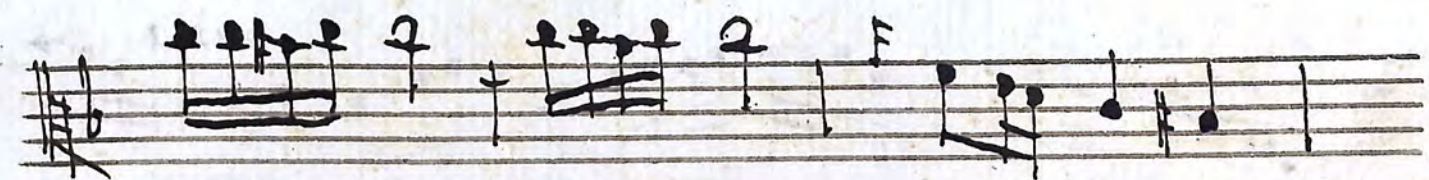
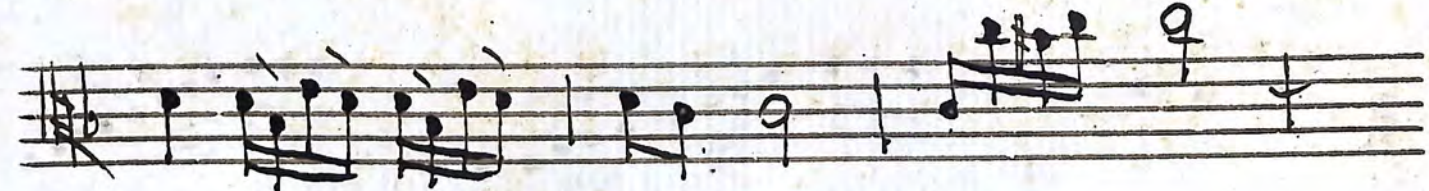
mod.to
Allegro

This image shows a page of handwritten musical notation for a Viola part. The score is written on ten five-line staves. The first staff begins with the tempo markings "mod.to" and "Allegro" in a cursive hand. The music is written in a treble clef with a key signature of one sharp (F#). The notation includes a variety of rhythmic values, such as eighth and sixteenth notes, often grouped in beams. There are also some rests and dynamic markings. The handwriting is fluid and characteristic of a composer's sketch or a working draft. The paper shows signs of age, with some yellowing and foxing.

A handwritten musical score consisting of ten staves. The notation is dense and includes various rhythmic values, accidentals, and slurs. The first staff begins with a treble clef and a sharp sign. The music is written in a cursive, handwritten style. The staves are numbered 1 through 10 from top to bottom. The notation includes eighth notes, sixteenth notes, and some complex rhythmic patterns. There are several slurs and accents throughout the piece. The paper shows signs of age, with some staining and discoloration.

Andante Segue

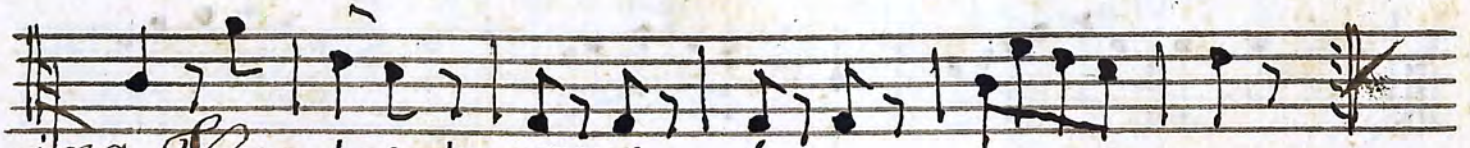
Andante $\frac{3}{4}$



A handwritten musical score consisting of ten staves. The notation is in a single system, likely for a single melodic line. The first staff begins with a treble clef and a 6/8 time signature. The music features a variety of note values, including eighth and sixteenth notes, and rests. There are several instances of beamed sixteenth notes, suggesting a rhythmic pattern. The score includes dynamic markings such as 'f' (forte) and 'ff' (fortissimo), and articulation marks like slurs and accents. The paper shows signs of age, with some staining and discoloration.

All: Segue

6
All.^o
Finale



1mo Variazio Tacet

2do
Variazio

