

Basso

CONCERTO a 4

Flauto Traverso Violino 1 Violino 2 e Basso

Trasc. Roberto Frigato da copia di manoscritto

G. B. Pergolesi (1710-1736)

Allegro

The image displays a musical score for the Bassoon part of a Concerto a 4 by G. B. Pergolesi. The score is written in bass clef with a key signature of one sharp (F#) and a common time signature (C). The tempo is marked 'Allegro'. The score consists of ten staves of music, with measure numbers 5, 11, 28, 33, 41, 47, 52, and 58 indicated at the beginning of their respective staves. The music features a variety of rhythmic patterns, including eighth and sixteenth notes, and rests. There are several fingerings indicated by numbers 4, 5, 6, and 3. The score concludes with a final measure on the tenth staff.

63



69

Largo

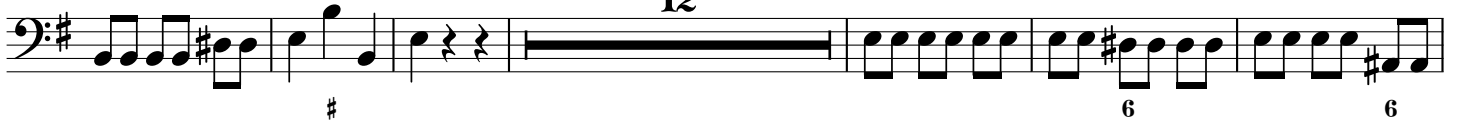


75

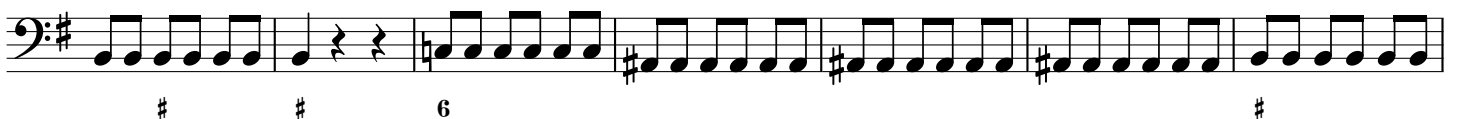


81

12



99



106



113

Presto



121



133

25



169

2



182



193



204



Flauto

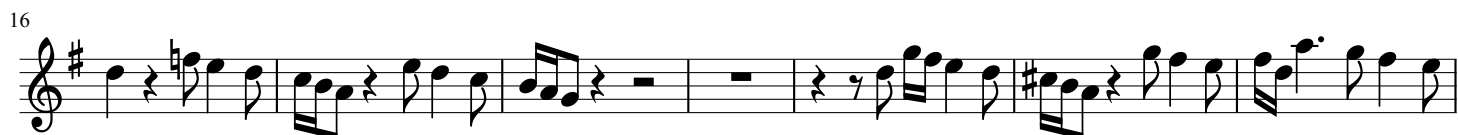
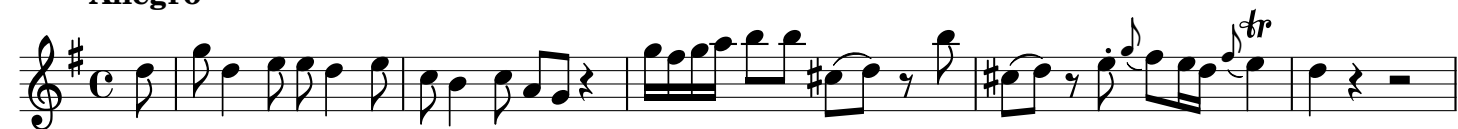
CONCERTO a 4

Flauto Traverso Violino 1 Violino 2 e Basso

Trasc. Roberto Frigato da copia di manoscritto

G. B. Pergolesi (1710-1736)

Allegro



62

67

Largo

72

77

82

88

92

98

104

109

Presto

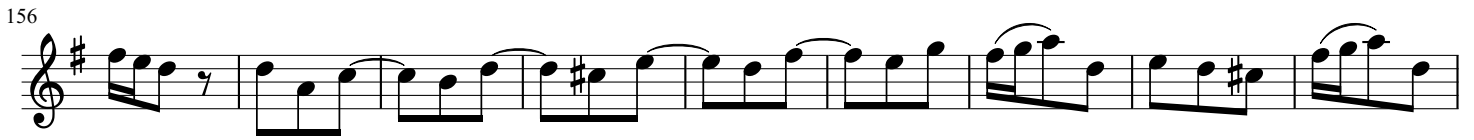
120

18

147



156



165



180



189



198



209



Violino I

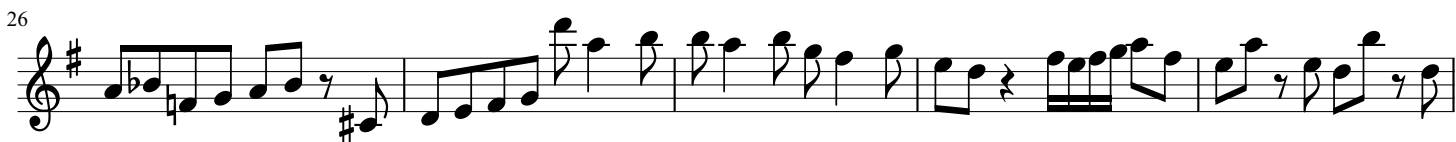
CONCERTO a 4

Flauto Traverso Violino 1 Violino 2 e Basso

Trasc. Roberto Frigato da copia di manoscritto

G. B. Pergolesi (1710-1736)

Allegro



45



50



55



60



64



Largo

68



73



77



82



88



95



102



109



115

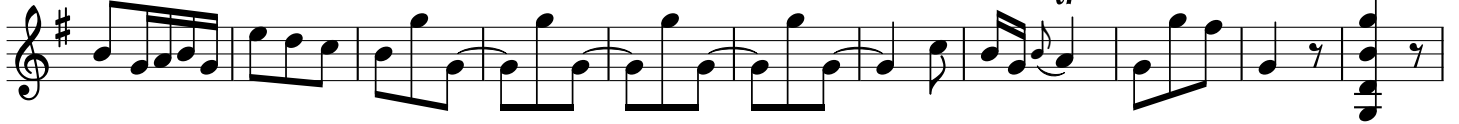


Presto

122



131



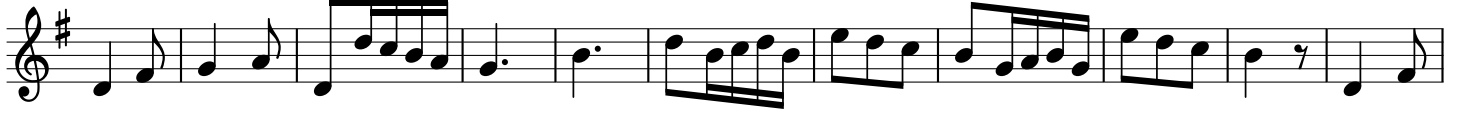
142



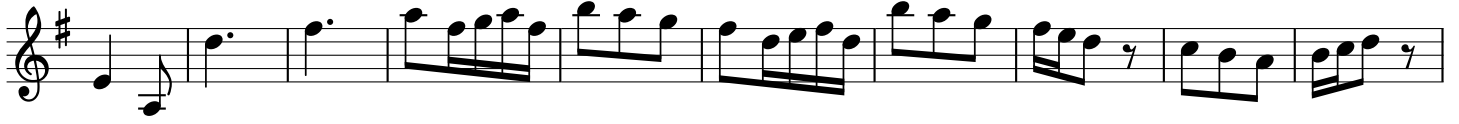
153



164



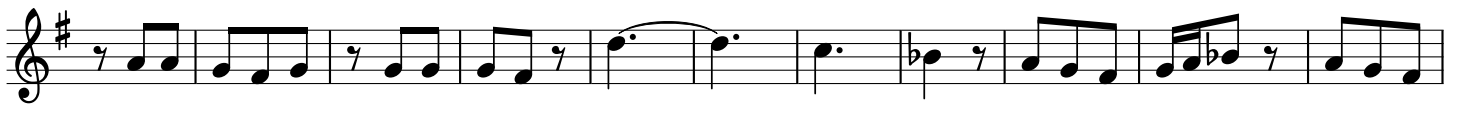
175



185



195



A musical score for a single staff, measures 206-212. The key signature is one sharp (F#). The notation includes eighth and sixteenth notes, rests, and chords. Measure 206 starts with a treble clef and a sharp sign. The melody begins with an eighth-note pair (G4, A4), followed by a quarter note (B4), a quarter rest, and a quarter note (C5). Measure 207 continues with a quarter note (D5), a quarter note (E5), a quarter note (F5), and a quarter note (G5). Measure 208 features a quarter note (A5) with a fermata, a quarter rest, and a quarter note (B5). Measure 209 has an eighth-note pair (C6, D6), an eighth-note pair (E6, F6), and a quarter note (G6). Measure 210 contains a quarter note (A6), a quarter rest, a quarter rest, and a quarter note (B6). Measure 211 shows a chord of G5 and B5, followed by a quarter rest. Measure 212 concludes with a chord of G5 and B5, followed by a quarter rest, and a double bar line.

Violino II

CONCERTO a 4

Flauto Traverso Violino 1 Violino 2 e Basso

Trasc. Roberto Frigato da copia di manoscritto

G. B. Pergolesi (1710-1736)

Allegro

6

10

14

19

23

28

33

37

42



47



51



56



61



66



71



76



82



88



93



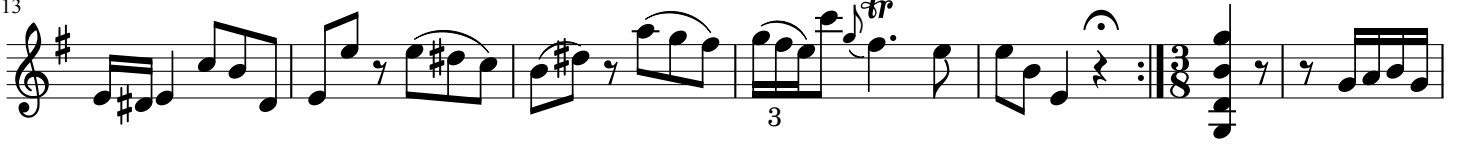
100



107



113



119



129



139



151



163



174



184



194



206

