

Sonate F-Dur

HWV 369 (op. 1, Nr. 11)
für Alt-Blockflöte und Basso continuo

1. und 2. Satz

Georg Friedrich Händel (1685-1759)
Generalbassaussetzung: Johan van Slageren

Alt-Blockflöte

Grave

Basso continuo

10

Basso continuo

19

Basso continuo

27

Basso continuo

36

6
4
2

6 6 4 6 6 6 4 6 6 6 4 3 6 6 6 7 6 4

Allegro

tr

Allegro

6 6 6 6 6 6 6 6 6 6 6 6

5

6 6 6 6 4 6 6 4 6

8

6 4 6 4 6 5

11

6 5 6 7 6 7 6 6 6

15

6 6 6 6 6 6 6 6 6 6 6 6 6 6

19

6 6 6 6 6

22

6 7 7 6 7

25

6 6 7 6 5 3 6 7 6 6 6 7 6 5

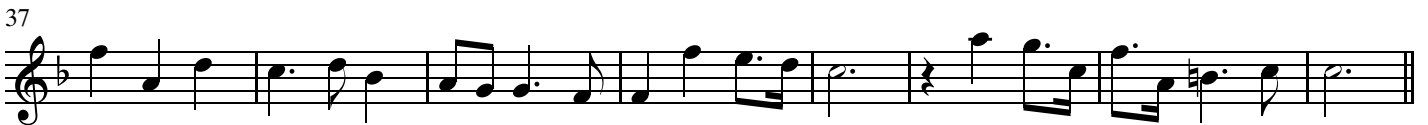
Alt-Blockflöte

Sonate F-Dur

HWV 369 (op. 1, Nr. 11)
für Alt-Blockflöte und Basso continuo
1. und 2. Satz

Georg Friedrich Händel (1685-1759)

Grave



Allegro

4

7

9

12

16

19

21

23

26

www.el-atril.com

Basso continuo

Sonate F-Dur

HWV 369 (op. 1, Nr. 11)
für Alt-Blockflöte und Basso continuo
1. und 2. Satz

Georg Friedrich Händel (1685-1759)

Grave

6 6 6 6 5 6 6 7 4 3 6 4 3

9

6 6 6 5 6 6 6 4 6 6 5 4 6 6 6 6

18

6 6 6 6 5 9 6 6 6 7 6 6 6 6 6 6 4 5 6 4 # 6 4 2

27

6 6 6 6 7 6 6 6 6 4 6 7 6 7 6 5

35

6 6 6 6 6 6 4 3 6 6 6 7 6

Allegro

Musical score in bass clef, C major, 4/4 time, marked Allegro. The score consists of seven staves of music with fingerings indicated by numbers 1-7 below the notes. A repeat sign appears at the beginning of the sixth staff.

Staff 1: Fingerings 6, 6, 6, 6, 6, 6, 6, 6, 6

Staff 2 (4): Fingerings 6, 6, 6, 6, 6, 6, 6 ♯, 6, 6, ♯, 6

Staff 3 (8): Fingerings 6♯, 6, ♯, 6, 5, 6, 5, ♯, 6, 7, ♯

Staff 4 (12): Fingerings 6, ♯, 6, 7, ♯, ♯, 6, ♯, 6, ♯, 6, 6

Staff 5 (16): Fingerings ♯, 6, 6 ♯, ♯, 6, 6, ♯, 6, 6 ♭, 6, 7 ♯, 6 ♯, 6, 6, 6, 6

Staff 6 (20): Fingerings 6, 6, 6, 6, 6, 7, 7, 6, 7

Staff 7 (25): Fingerings 6, 6, 7, 6, 5, 3, 6, 7, 6, 6, 6, 7, 6, 6, 5