

Juan Crisóstomo de Arriaga

OBRAS COMPLETAS / COMPLETE WORKS

“Herminie”: Cantate

para soprano y orquesta / *for soprano and orchestra*

Violini 1

Fundación Vizcaína Aguirre



Fundación
Vizcaína Aguirre

Herminie Cantate

para soprano y orquesta

Allegro $\text{♩} = 96$

pizz.



5



10



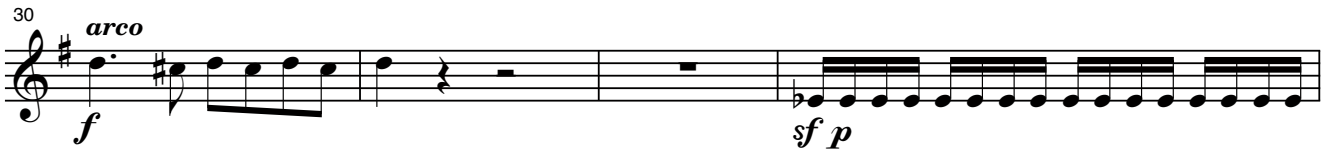
15



22



30



34



37



44



Herminie Cantate - Violini 1

49 *ff* *p*

Measures 49-54: Treble clef, key signature of one sharp (F#), 4/4 time. Measure 49 is a whole rest. Measure 50 has a quarter rest followed by an eighth note G5. Measure 51 has a quarter rest followed by an eighth note A5. Measure 52 has a quarter rest followed by an eighth note B5. Measure 53 has a quarter rest followed by an eighth note C6. Measure 54 has a quarter rest followed by an eighth note D6. A fermata is placed over the D6. A '2' is written above the staff between measures 51 and 52, indicating a second ending.

Andante ♩ = 88

55 *f* *p*

Measures 55-63: Treble clef, key signature of one flat (Bb), 4/4 time. Measure 55: quarter note G4, quarter note A4. Measure 56: quarter note Bb4, quarter note C5. Measure 57: quarter note D5, quarter note E5. Measure 58: quarter note F5, quarter note G5. Measure 59: quarter note A5, quarter note B5. Measure 60: quarter note C6, quarter note B5. Measure 61: quarter note A5, quarter note G5. Measure 62: quarter note F5, quarter note E5. Measure 63: quarter note D5, quarter note C5. A fermata is placed over the C5.

64 *p*

Measures 64-69: Treble clef, key signature of one flat (Bb), 4/4 time. Measure 64: quarter note G4, quarter note A4. Measure 65: quarter note Bb4, quarter note C5. Measure 66: quarter note D5, quarter note E5. Measure 67: quarter note F5, quarter note G5. Measure 68: quarter note A5, quarter note B5. Measure 69: quarter note C6, quarter note B5.

70 *p*

Measures 70-75: Treble clef, key signature of one flat (Bb), 4/4 time. Measure 70: quarter note G4, quarter note A4. Measure 71: quarter note Bb4, quarter note C5. Measure 72: quarter note D5, quarter note E5. Measure 73: quarter note F5, quarter note G5. Measure 74: quarter note A5, quarter note B5. Measure 75: quarter note C6, quarter note B5.

76 *p*

Measures 76-82: Treble clef, key signature of one flat (Bb), 4/4 time. Measure 76: quarter note G4, quarter note A4. Measure 77: quarter note Bb4, quarter note C5. Measure 78: quarter note D5, quarter note E5. Measure 79: quarter note F5, quarter note G5. Measure 80: quarter note A5, quarter note B5. Measure 81: quarter note C6, quarter note B5. Measure 82: quarter note A5, quarter note G5.

83 *f* *ff* *p* *f* *ff*

Measures 83-88: Treble clef, key signature of one flat (Bb), 4/4 time. Measure 83: quarter note G4, quarter note A4. Measure 84: quarter note Bb4, quarter note C5. Measure 85: quarter note D5, quarter note E5. Measure 86: quarter note F5, quarter note G5. Measure 87: quarter note A5, quarter note B5. Measure 88: quarter note C6, quarter note B5.

89 *f* *ff* *p* *f* *ff*

Measures 89-94: Treble clef, key signature of one flat (Bb), 4/4 time. Measure 89: quarter note G4, quarter note A4. Measure 90: quarter note Bb4, quarter note C5. Measure 91: quarter note D5, quarter note E5. Measure 92: quarter note F5, quarter note G5. Measure 93: quarter note A5, quarter note B5. Measure 94: quarter note C6, quarter note B5.

95 *p*

Measures 95-100: Treble clef, key signature of one flat (Bb), 4/4 time. Measure 95: quarter note G4, quarter note A4. Measure 96: quarter note Bb4, quarter note C5. Measure 97: quarter note D5, quarter note E5. Measure 98: quarter note F5, quarter note G5. Measure 99: quarter note A5, quarter note B5. Measure 100: quarter note C6, quarter note B5.

101 *p*

Measures 101-106: Treble clef, key signature of one flat (Bb), 4/4 time. Measure 101: quarter note G4, quarter note A4. Measure 102: quarter note Bb4, quarter note C5. Measure 103: quarter note D5, quarter note E5. Measure 104: quarter note F5, quarter note G5. Measure 105: quarter note A5, quarter note B5. Measure 106: quarter note C6, quarter note B5.

107 *p cresc.* *f*

Measures 107-112: Treble clef, key signature of one flat (Bb), 4/4 time. Measure 107: quarter note G4, quarter note A4. Measure 108: quarter note Bb4, quarter note C5. Measure 109: quarter note D5, quarter note E5. Measure 110: quarter note F5, quarter note G5. Measure 111: quarter note A5, quarter note B5. Measure 112: quarter note C6, quarter note B5.

113 *f* *dim.* *p*

120

127

134 **Più moto** *pp*

139 *cresc.* *f* *p*

144 *f*

147 *p* *f*

149

151

153 *ff*

Herminie Cantate - Violini 1

155 *p*

159 *f*

163 **Allegro** *ff* **Recitativo** *f* 2

169 *f* *p*

172 *ff*

175 *f*

181 *ff*

184 *ff* **Andante** 2

188 **Allegro** *ff*

191 *pp*

193

ff *pp* *ff*

196

f *ff*

199 **Allegro agitato** $\text{♩} = 80$

p *cresc.*

204

f

206

209

ff *cresc.*

212

ff

214

p

218

p

223

f

Herminie Cantate - Violini 1

228

p

235

p *cresc.*

241

f *ff*

246

251

f

256

258

p *cresc.*

262

f

265

267

269 *ff* *cresc.*

272 *f* *sf* *sf* *cresc.*

275 *sf* *ff*

277 *pp* *sf*

280 *sf* *cresc.*

282 *ff* *pp*

285 *f* *ff*

288 *ff*

290

295 **Recitativo** *p* **Lento** *dolce*

Herminie Cantate - Violini 1

299

f *p*

303 **Allegro**

f *f*

307

f *f*

311 **Allegretto** ♩ = 84

f *p*

317

f *f*

325 *pizz.*

f *pizz.*

332

f *f*

339 *arco*

f *f*

347

p *f*

354

f *p* *cresc.*

362 *pizz.*
sf >

369
f *p*

376
sf >

383
f *p*

390
cresc. *f* *pizz.*

397

404 *Più moto* *arco*
pp *pp*

411
cresc.

416
f *p* *cresc.*

420
ff *p* *f*

Herminie Cantate - Violini 1

424

428 *cresc.*

433 *f p cresc. ff p*

437 *f ff*

441 *f*

446 *f*

451 *cresc.*

457 *ff*

460

467

Detailed description: This page contains the musical score for the first violin part of 'Herminie Cantate', measures 424 through 467. The score is written in treble clef with a key signature of one sharp (F#). It features a variety of rhythmic patterns, including eighth and sixteenth notes, and frequent triplet markings. Dynamics range from piano (*p*) to fortissimo (*ff*), with crescendos and decrescendos. The piece concludes with a fermata on the final note of measure 467.

Juan Crisóstomo de Arriaga

Obras completas / Complete works

Herminie Cantate

Violini 1

<http://www.arriagaobrascompletas.com>

Coordinación del proyecto / *Project coordinator*: Isabel Gortázar

Asesoría musical / *Musical adviser*: Abili Fort

Editor y Distribuidor / *Editor and Distribution*: DINSIC Publicacions Musicals, S.L.
Santa Anna, 10 - E 3ª, 08002 - Barcelona

Publica / *Publisher*: **Fundación Vizcaína Aguirre**
Hurtado de Amézaga, 20 - 48008 Bilbao

© Copyright para la presente edición / *for this edition*: Fundación Vizcaína Aguirre, Bilbao, 2006.

Nota: La presente edición corresponde exactamente a la música original de Arriaga; por lo tanto, el contenido musical de las partituras aquí reproducidas es de dominio público.

Note: This edition corresponds exactly to the original Works as composed by Arriaga; therefore the music herein reproduced is in public domain.

Depósito Legal / *Catalogue book number*: B-50.540-2006

ISMN: M-69210-453-7

Impreso en / *Printed in*: Cálamo Producciones Editoriales
Unió, 2 - 1º 1ª - 08302 Mataró