

Pieces en Trio

Pour les Flutes, Violon, & Dessus de Viole

Paris 1692

Marin Marais

1656 – 1728

Published by Johan Tufvesson.

Non-commercial copying welcome

Revision : 1.12

Suite V

Marin Marais (1656-1728)

Prelude *lentement*

Musical score for the first staff of the Prelude, measures 1-50. The score is written in G major (one sharp) and common time (C). It begins with a treble clef and a '2' above the first measure. The tempo is marked 'lentement'. The score consists of ten staves of music, with measure numbers 7, 12, 17, 23, 28, 33, 37, 41, 46, and 50 indicated at the start of their respective staves. The music features a variety of rhythmic patterns, including eighth and sixteenth notes, and rests. There are several trills marked with a '+' sign. The piece concludes with a final cadence in measure 50.

un peu plus vite

54

58

gravement

62

Fantaisie

6

12

18

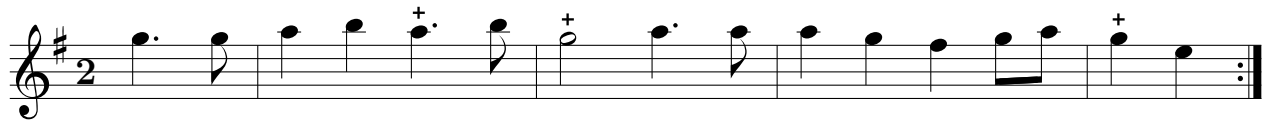
23

29

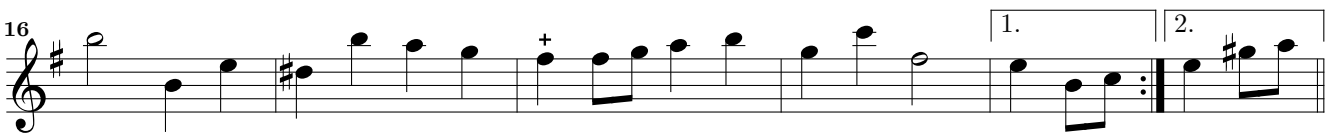
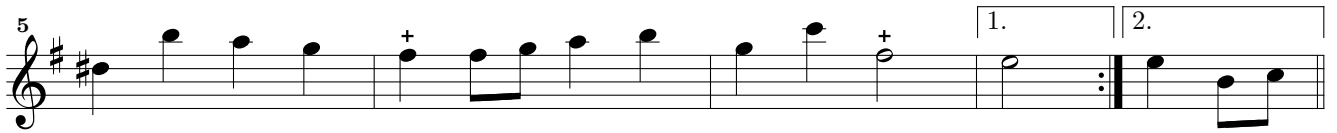
36

41

Gavotte



Rondeau



Sarabande En rondeau

Musical score for Sarabande En rondeau, measures 1-35. The piece is in 3/4 time and G major. It features a melodic line with various ornaments (accents) and a repeat sign at measure 7. The notation includes treble clef, key signature of one sharp (F#), and a 3/4 time signature.

Menuet

Musical score for Menuet, measures 1-12. The piece is in 3/4 time and G major. It features a melodic line with various ornaments (accents) and a repeat sign at measure 6. The notation includes treble clef, key signature of one sharp (F#), and a 3/4 time signature.

Sarabande

Musical score for Sarabande, measures 1-21. The piece is in 3/4 time, G major, and features a melodic line with various ornaments and a repeat section with three endings.

Measures 1-4: Melodic line starting with a quarter note G4, followed by eighth notes A4, B4, C5, B4, A4, G4. Measure 5 has a quarter note G4 with an accent (+). Measure 6 has a quarter note F#4 with an accent (+). Measure 7 has a quarter note E4 with an accent (+). Measure 8 has a quarter note D4 with an accent (+). Measure 9 has a quarter note C4 with an accent (+). Measure 10 has a quarter note B3 with an accent (+). Measure 11 has a quarter note A3 with an accent (+). Measure 12 has a quarter note G3 with an accent (+). Measure 13 has a quarter note F#3 with an accent (+). Measure 14 has a quarter note E3 with an accent (+). Measure 15 has a quarter note D3 with an accent (+). Measure 16 has a quarter note C3 with an accent (+). Measure 17 has a quarter note B2 with an accent (+). Measure 18 has a quarter note A2 with an accent (+). Measure 19 has a quarter note G2 with an accent (+). Measure 20 has a quarter note F#2 with an accent (+). Measure 21 has a quarter note E2 with an accent (+).

Measures 22-24: First ending. Measure 22 has a quarter note G4 with an accent (+). Measure 23 has a quarter note F#4 with an accent (+). Measure 24 has a quarter note E4 with an accent (+).

Measures 25-27: Second ending. Measure 25 has a quarter note G4 with an accent (+). Measure 26 has a quarter note F#4 with an accent (+). Measure 27 has a quarter note E4 with an accent (+).

Measures 28-30: Third ending. Measure 28 has a quarter note G4 with an accent (+). Measure 29 has a quarter note F#4 with an accent (+). Measure 30 has a quarter note E4 with an accent (+).

p.te reprise

Menuet

Musical score for Menuet, measures 1-19. The piece is in 3/4 time, G major, and features a melodic line with various ornaments and a repeat section.

Measures 1-4: Melodic line starting with a quarter note G4, followed by eighth notes A4, B4, C5, B4, A4, G4. Measure 5 has a quarter note F#4 with an accent (+). Measure 6 has a quarter note E4 with an accent (+). Measure 7 has a quarter note D4 with an accent (+). Measure 8 has a quarter note C4 with an accent (+). Measure 9 has a quarter note B3 with an accent (+). Measure 10 has a quarter note A3 with an accent (+). Measure 11 has a quarter note G3 with an accent (+). Measure 12 has a quarter note F#3 with an accent (+). Measure 13 has a quarter note E3 with an accent (+). Measure 14 has a quarter note D3 with an accent (+). Measure 15 has a quarter note C3 with an accent (+). Measure 16 has a quarter note B2 with an accent (+). Measure 17 has a quarter note A2 with an accent (+). Measure 18 has a quarter note G2 with an accent (+). Measure 19 has a quarter note F#2 with an accent (+).

Measures 20-22: First ending. Measure 20 has a quarter note G4 with an accent (+). Measure 21 has a quarter note F#4 with an accent (+). Measure 22 has a quarter note E4 with an accent (+).

Measures 23-25: Second ending. Measure 23 has a quarter note G4 with an accent (+). Measure 24 has a quarter note F#4 with an accent (+). Measure 25 has a quarter note E4 with an accent (+).

Measures 26-28: Third ending. Measure 26 has a quarter note G4 with an accent (+). Measure 27 has a quarter note F#4 with an accent (+). Measure 28 has a quarter note E4 with an accent (+).

Caprice lentement

Musical score for Caprice lentement, measures 1-5. The piece is in 2/4 time, G major, and features a melodic line with various ornaments and a repeat section.

Measures 1-4: Melodic line starting with a quarter note G4, followed by eighth notes A4, B4, C5, B4, A4, G4. Measure 5 has a quarter note F#4 with an accent (+). Measure 6 has a quarter note E4 with an accent (+). Measure 7 has a quarter note D4 with an accent (+). Measure 8 has a quarter note C4 with an accent (+). Measure 9 has a quarter note B3 with an accent (+). Measure 10 has a quarter note A3 with an accent (+). Measure 11 has a quarter note G3 with an accent (+). Measure 12 has a quarter note F#3 with an accent (+). Measure 13 has a quarter note E3 with an accent (+). Measure 14 has a quarter note D3 with an accent (+). Measure 15 has a quarter note C3 with an accent (+). Measure 16 has a quarter note B2 with an accent (+). Measure 17 has a quarter note A2 with an accent (+). Measure 18 has a quarter note G2 with an accent (+). Measure 19 has a quarter note F#2 with an accent (+).

Measures 20-22: First ending. Measure 20 has a quarter note G4 with an accent (+). Measure 21 has a quarter note F#4 with an accent (+). Measure 22 has a quarter note E4 with an accent (+).

Measures 23-25: Second ending. Measure 23 has a quarter note G4 with an accent (+). Measure 24 has a quarter note F#4 with an accent (+). Measure 25 has a quarter note E4 with an accent (+).

The image displays a musical score for the first part of 'Pieces en trio - Suite V - 1er Dessus'. The score is written on a single staff in treble clef with a key signature of one sharp (F#). It consists of ten lines of music, each starting with a measure number: 9, 13, 17, 21, 27, 35, 40, 46, 51, and 56. The notation includes various rhythmic values such as eighth, sixteenth, and quarter notes, as well as rests. There are several instances of grace notes (marked with a '+') and slurs. A measure at the beginning of the fifth line (measure 27) contains a '4' above a vertical bar, indicating a four-measure rest. The score concludes with a double bar line and repeat dots at the end of the tenth line (measure 61).

Paßacaille

The image displays a musical score for the piece 'Paßacaille' from 'Suite V' for Trio, specifically the first violin part. The score is written in treble clef with a key signature of one sharp (F#) and a 3/4 time signature. It consists of ten staves of music, each beginning with a measure number: 1, 6, 11, 16, 21, 26, 31, 36, 41, and 46. The music features a variety of rhythmic patterns, including eighth and sixteenth notes, often beamed together. There are several instances of grace notes (marked with a '+') and slurs. The piece concludes with a final cadence in the 48th measure.

52

58

66

72

15

92

98

104

109

114

119

124