

84. SONATA

J. H. Biber

Adagio

8

9

10

11

13

15

17

19

21

23

27

30

31

32

34

36

37

39

42

(12/8 nur in Violinstimme)

44

47

50

53

56

61

67

71

75

78

82

85

87

88

89

90

95 t.?

104

114

118

122

126 t.

131 (original gis2-e2-cis1-a1)

135

140

144 t.

152

162

168

171



175



180



184



189



192



197



200



205

209

210

212

214

216

218

220

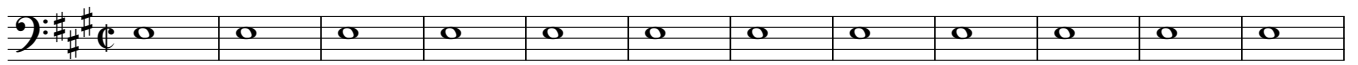
222

223

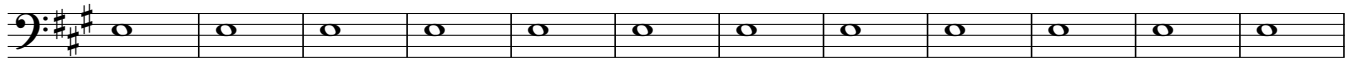
84. SONATA

J. H. Biber

Adagio



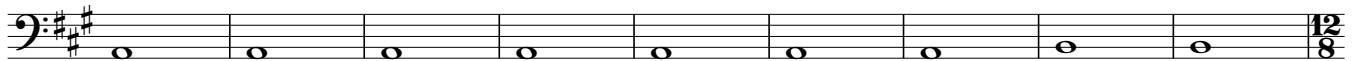
13



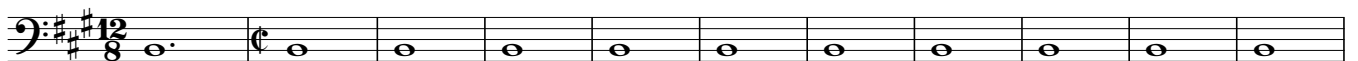
25



34



43 (12/8 nur in Violinstimme)



54



62



71



81



91



101



111



124

Musical staff for measure 124 in bass clef with a key signature of two sharps (F# and C#). The staff contains a sequence of notes: F#4, G4, A4, B4, C5, B4, A4, G4, F#4, E4, D4, C4. Fingering numbers are placed below the notes: #, 6, 4, #, #, 6, #, 6.

135

Musical staff for measure 135 in bass clef with a key signature of two sharps. The staff contains a sequence of notes: F#4, G4, A4, B4, C5, B4, A4, G4, F#4, E4, D4, C4. Fingering numbers are placed below the notes: 4, #, #, 6, 4, #.

146

Musical staff for measure 146 in bass clef with a key signature of two sharps. The staff contains a sequence of notes: F#4, G4, A4, B4, C5, B4, A4, G4, F#4, E4, D4, C4. Fingering numbers are placed below the notes: #, 4, #, 5, 6, 6, #, 5, 6, 6, #.

158

Musical staff for measure 158 in bass clef with a key signature of two sharps. The staff contains a sequence of notes: F#4, G4, A4, B4, C5, B4, A4, G4, F#4, E4, D4, C4. Fingering numbers are placed below the notes: 5, 6, 6, 6, #, 4, #, #, 4, #, #, 4-#.

167

Musical staff for measure 167 in bass clef with a key signature of two sharps. The staff contains a sequence of notes: F#4, G4, A4, B4, C5, B4, A4, G4, F#4, E4, D4, C4. Fingering numbers are placed below the notes: #, #, #, #, #, #, #.

174

Musical staff for measure 174 in bass clef with a key signature of two sharps. The staff contains a sequence of notes: F#4, G4, A4, B4, C5, B4, A4, G4, F#4, E4, D4, C4. Fingering numbers are placed below the notes: #, #, #, #, #, #, #, 4-#.

181

Musical staff for measure 181 in bass clef with a key signature of two sharps. The staff contains a sequence of notes: F#4, G4, A4, B4, C5, B4, A4, G4, F#4, E4, D4, C4. Fingering numbers are placed below the notes: #, 4-#, #, 4-#, #, 4-#, #.

188

Musical staff for measure 188 in bass clef with a key signature of two sharps. The staff contains a sequence of notes: F#4, G4, A4, B4, C5, B4, A4, G4, F#4, E4, D4, C4. Fingering numbers are placed below the notes: 4-#, #, #, #, #, #, #.

195

Musical staff for measure 195 in bass clef with a key signature of two sharps. The staff contains a sequence of notes: F#4, G4, A4, B4, C5, B4, A4, G4, F#4, E4, D4, C4. Fingering numbers are placed below the notes: #, #, #, #, #, #, #, #.

203

Musical staff for measure 203 in bass clef with a key signature of two sharps. The staff contains a sequence of notes: F#4, G4, A4, B4, C5, B4, A4, G4, F#4, E4, D4, C4. Fingering numbers are placed below the notes: #, #.

212

Musical staff for measure 212 in bass clef with a key signature of two sharps. The staff contains a sequence of notes: F#4, G4, A4, B4, C5, B4, A4, G4, F#4, E4, D4, C4. Fingering numbers are placed below the notes: #, #, #, #, #, #, #, #, #, #, #.

223

Musical staff for measure 223 in bass clef with a key signature of two sharps. The staff contains a sequence of notes: F#4, G4, A4, B4, C5, B4, A4, G4, F#4, E4, D4, C4. Fingering numbers are placed below the notes: #, #.