

Sonata Representativa

Violino Solo

Olomouc 1669

Heinrich Ignaz Franz von Biber

1644 – 1704

Published by Johan Tufvesson.

Non-commercial copying welcome

Revision : 1.7

2 Basso Continuo Sonata Violino Solo rappresentiva

Heinrich Ignaz Franz von Biber
(1644-1704)

Allegro

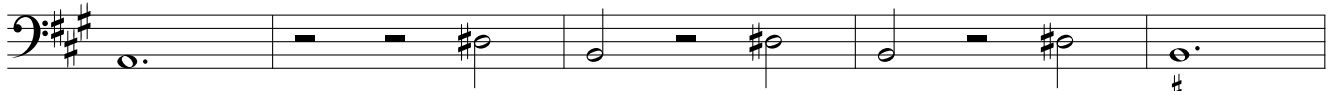
7
12
16
20
24
29
33
38 *Nachtigal*
43
50
55
60

64 *CuCu*

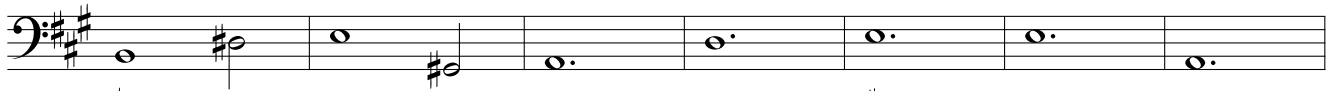
71



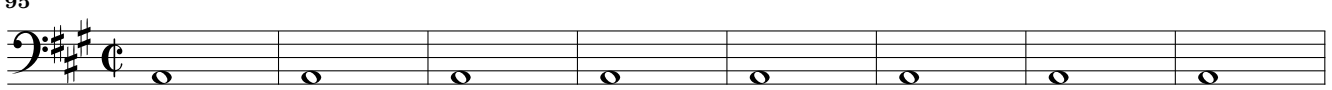
78



83



90

95 *Frosch*

103

Adagio

109

Allegro
Die Henne

115



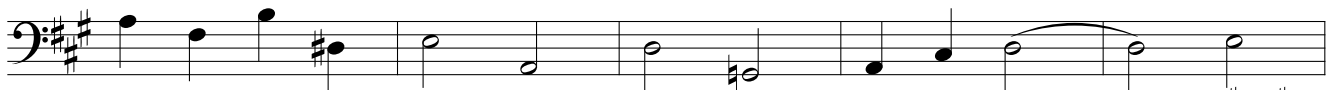
120



125

Presto

130

135 *Adagio*
Die Wachtel

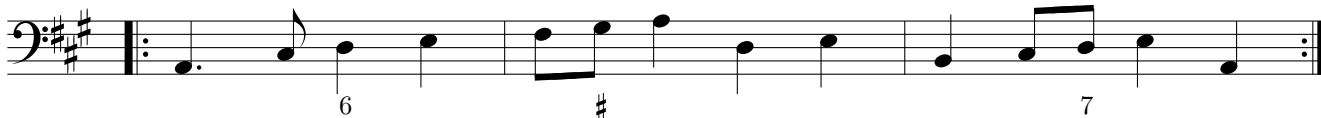
140

*Die Katz*

145



148

*Musketier Marsch*

151



154



157



160



162

*Allemande*

164



170



174



178



Sonata Representativa

Violino Solo

Olomouc 1669

Heinrich Ignaz Franz von Biber

1644 – 1704

Published by Johan Tufvesson.

Non-commercial copying welcome

Revision : 1.7

Violino Solo

Sonata Violino Solo rappresentativa

Heinrich Ignaz Franz von Biber
(1644-1704)

Allegro

5

8

12

16

19

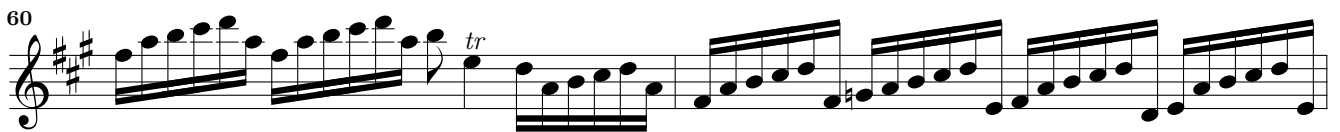
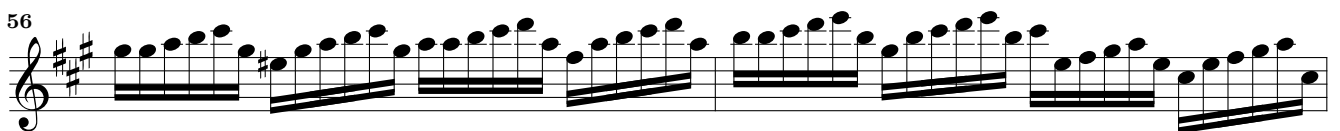
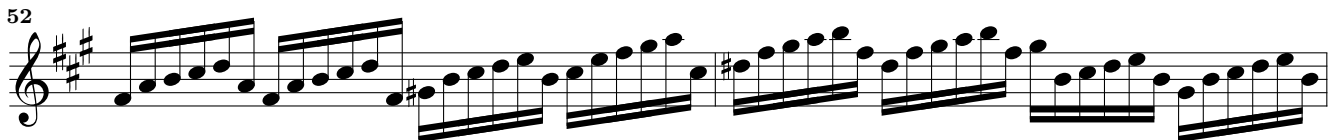
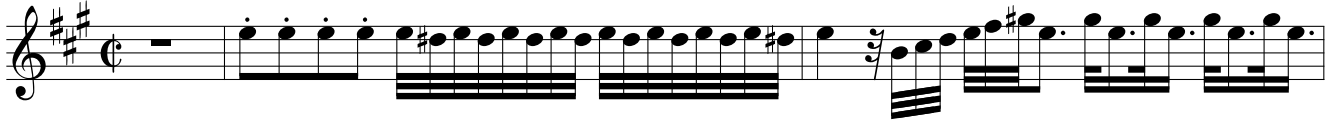
22

25

28

31

34

38 *Nachtigal*

CuCu

64

67

70

73

76

79

82

85

88

91

The musical score for 'CuCu' consists of ten staves of music. It begins with a treble clef, a key signature of three sharps (F#, C#, G#), and a 3/2 time signature. The first staff (64) starts with a fermata over a whole note G4. The music is primarily composed of eighth-note patterns. Staves 67, 73, and 79 include fermatas over specific notes. Staff 82 features a fermata over a whole note G4. Staff 91 ends with a trill (tr) over a whole note G4, followed by a double bar line and a repeat sign.

Frosch

95

99

102

The musical score for 'Frosch' consists of three staves of music. It begins with a treble clef, a key signature of three sharps (F#, C#, G#), and a common time (C) signature. The first staff (95) features a melody of eighth notes with rests. The second staff (99) includes a complex rhythmic pattern with sixteenth-note runs. The third staff (102) continues with similar rhythmic patterns.

Adagio

106 *tr*

Allegro
Die Henne

110

114

Der Hahn

116

119

122

Presto

125

128

130

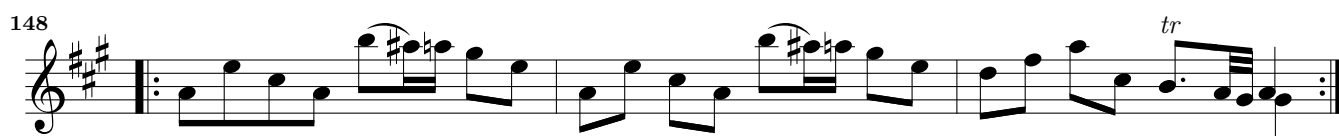
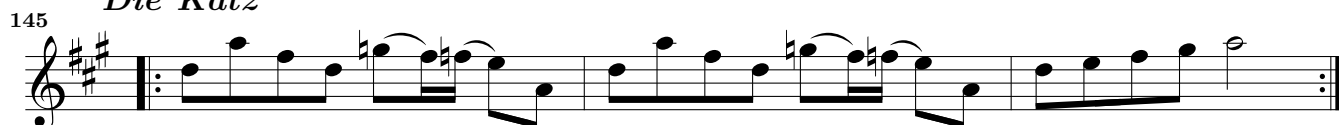
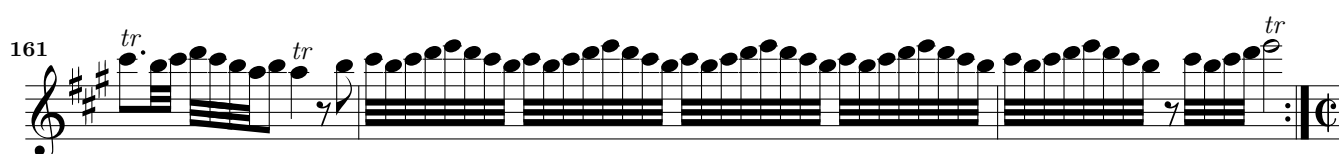
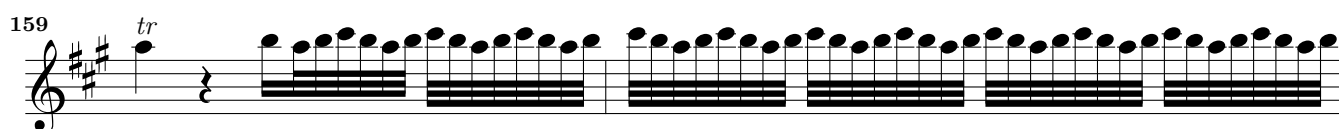
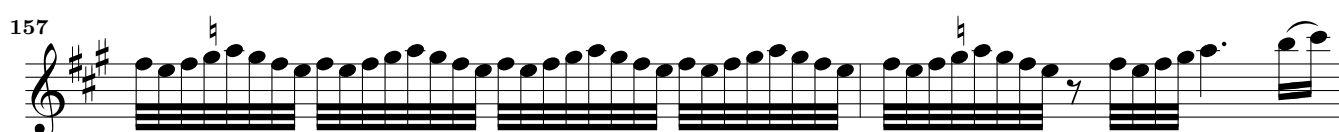
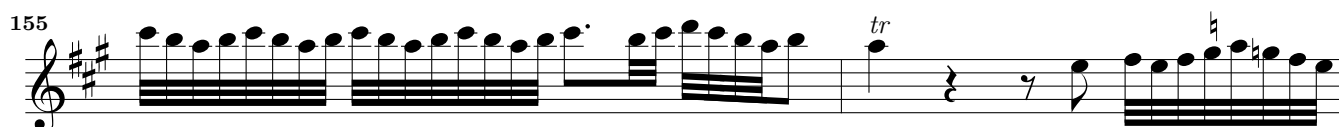
132

Adagio
Die Wachtel

134 *tr*

138

141 *tr*

Die Katz*Musketier Marsch**Allemande*