

# Kyrie *Missa in contrapuncto*

H.I.F. Biber

Viola 1

4

9

15

22

29

36

43

52

59

66

73

80

87

95

Kyrie ut supra

# Gloria



9



17



25



34



41



47



55



67



77



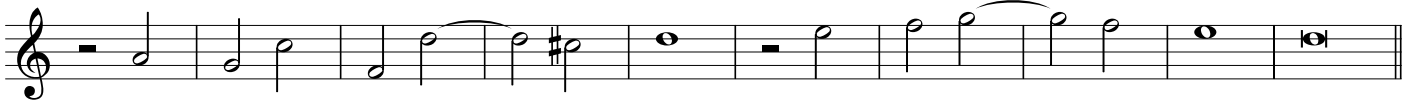
85



97



110



120



135



148



161



172



187



195



203



209



216



# Credo

11

23

32

42

53

63

80

89

100

110

122

138

161

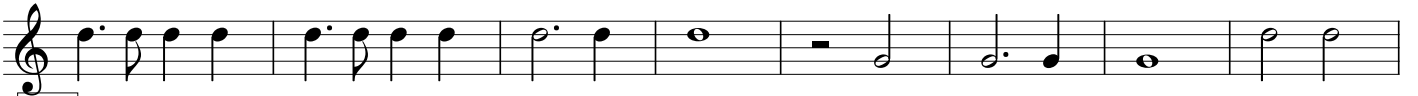
173

This musical score for 'Credo' consists of 12 staves of music. The notation includes various note values (quarter, eighth, and sixteenth notes), rests, and accidentals (sharps and naturals). Measure numbers are provided at the beginning of each staff: 11, 23, 32, 42, 53, 63, 80, 89, 100, 110, 122, 138, 161, and 173. Some measures contain numerical annotations: a '3' above a triplet in measure 11, a '3' above a triplet in measure 23, a '2' above a pair of notes in measure 25, a '4' above a group of notes in measure 44, a '3' above a triplet in measure 55, a '5' above a group of notes in measure 81, a '9' above a group of notes in measure 139, and a '12' above a group of notes in measure 162. The music concludes with a final measure on the 12th staff.

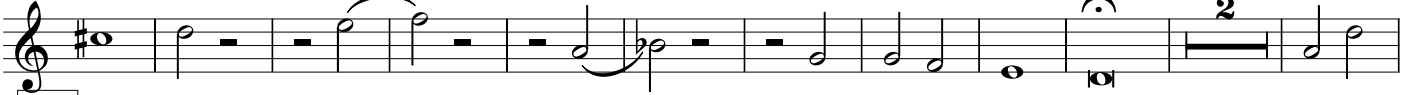
181



189



197



210



225



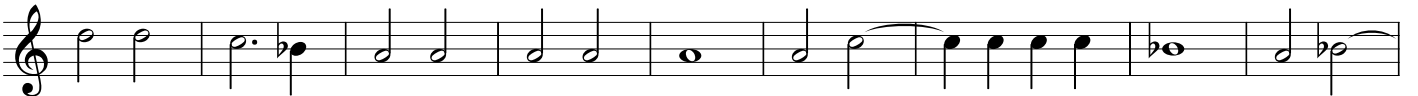
234



245



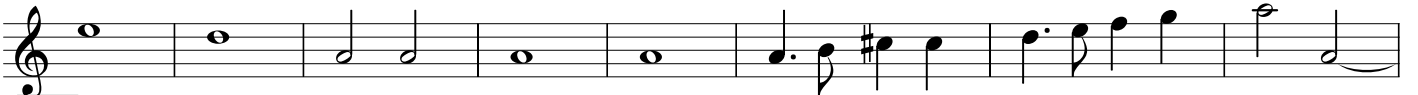
254



263



272



280



289



301



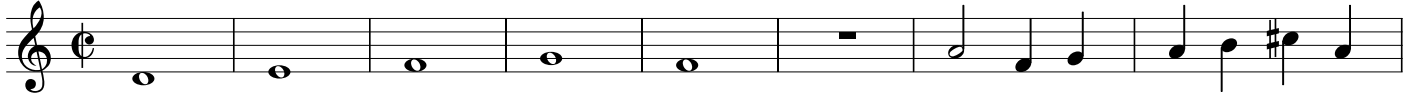
308



315



# Sanctus



9



17



26



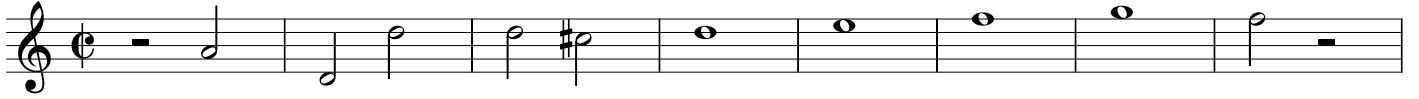
35



43



52



60



70



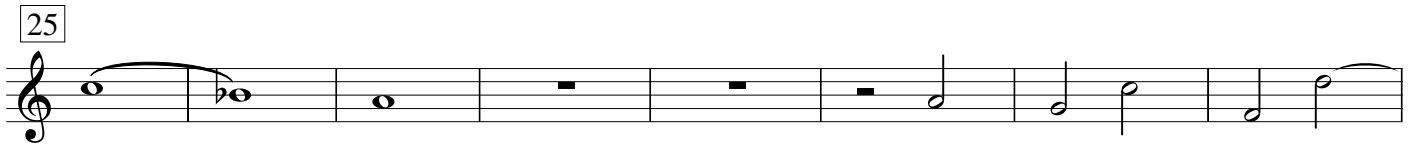
76



84



# Agnus Dei



# Missa in contrapuncto

## Kyrie

H.I.F. Biber

Viola 2



8



16



26



36



43



52



60



68



76



84



93



Kyrie ut supra



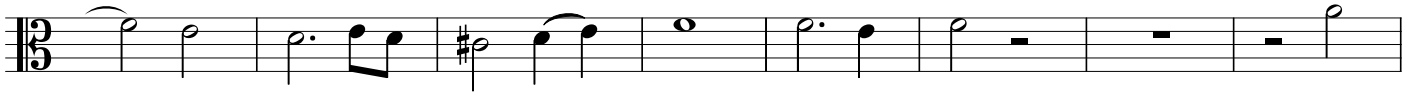
# Gloria



9



17



25



34



41



47



55



62



69



76



85



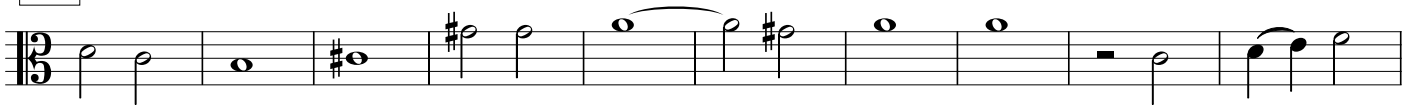




145



154



164



173



181



189



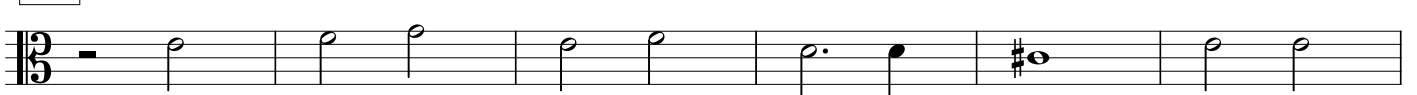
197



207



219



225



233



242



251



260



269



277



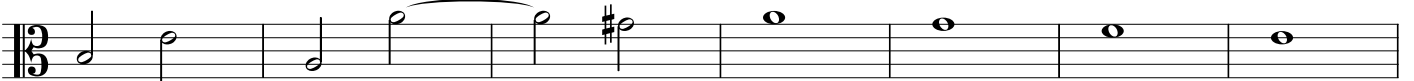
285



293



301



308

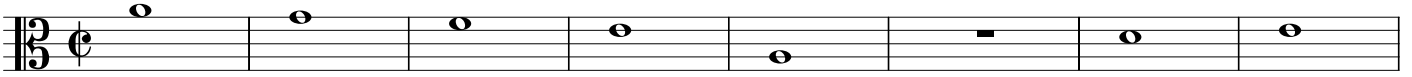


315





# Agnus Dei



9



17



25



33



40



47



54



61

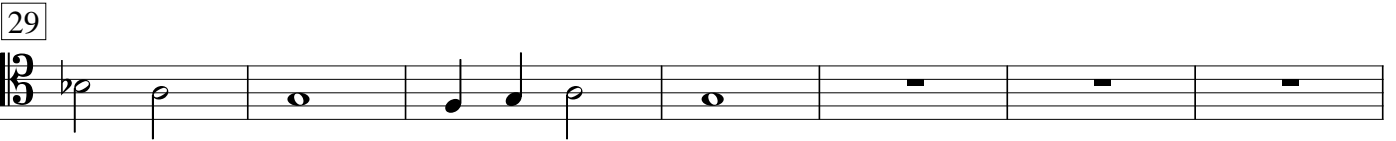
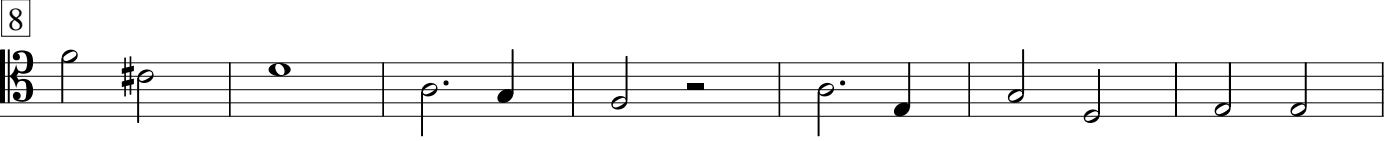
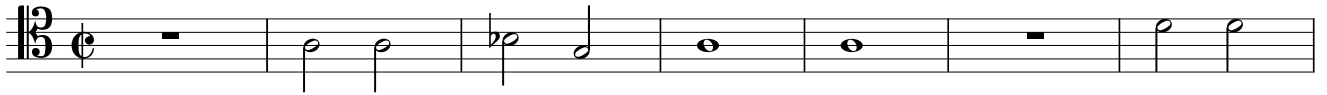


# Missa in contrapuncto

## Kyrie

H.I.F. Biber

Viola 3



Kyrie ut supra



# Gloria



10



19



27



36



45



55



62



71



85



93





# Credo



11



20



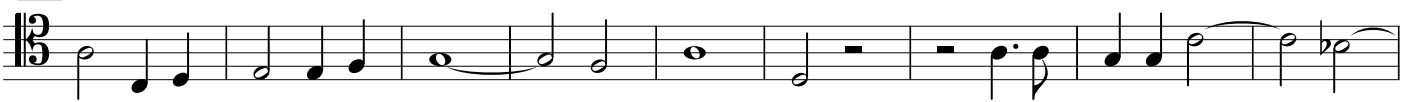
28



36



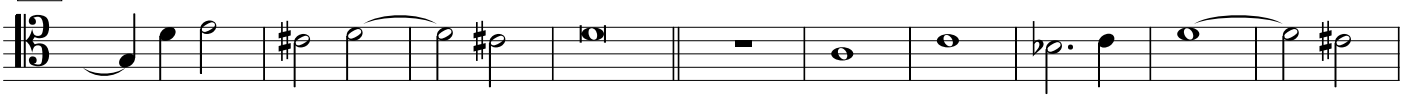
44



53



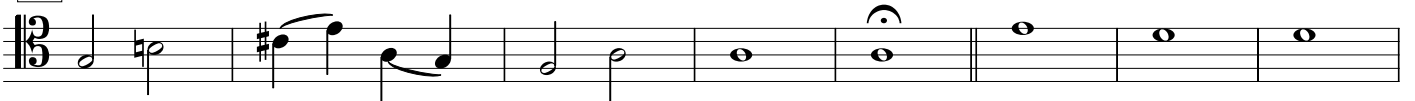
65



75



84



92



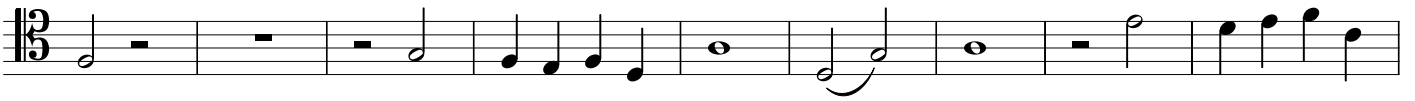
100



110



121



130



145



154



164



173



181



189



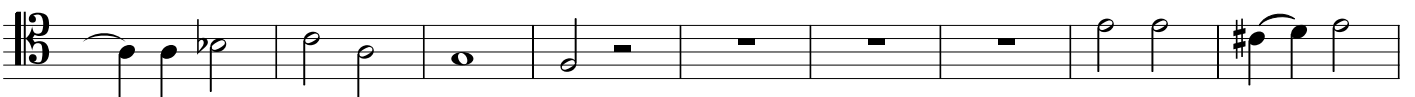
197



207



216



225



233



242



251



260



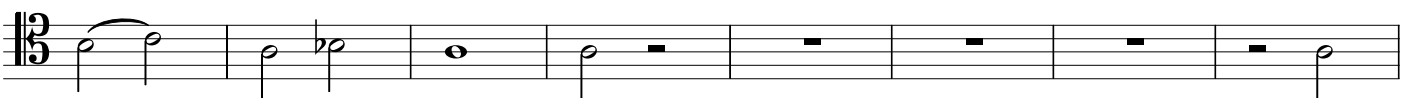
269



277



285



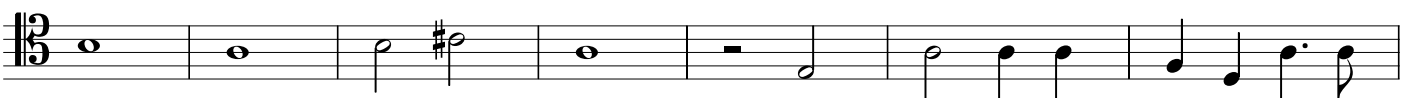
293



301



308



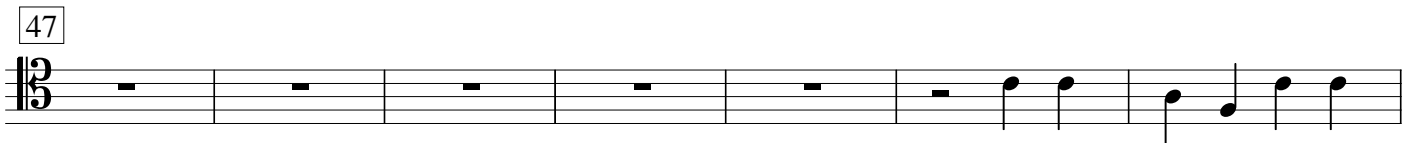
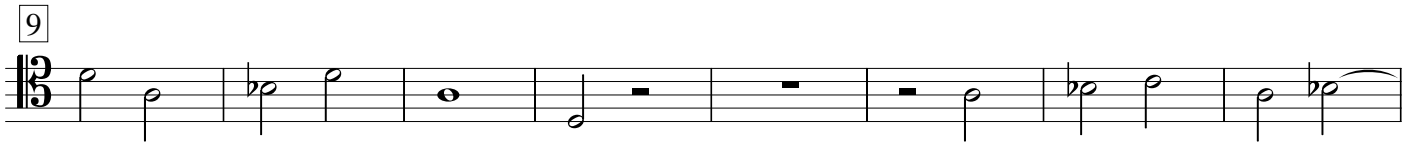
315



# Sanctus



# Agnus Dei



# Missa in contrapuncto

## Kyrie

H.I.F. Biber

Violone



8



19



29



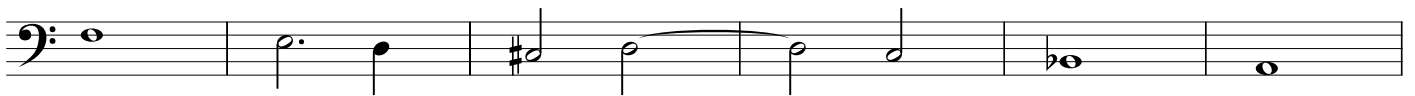
38



52



60



66



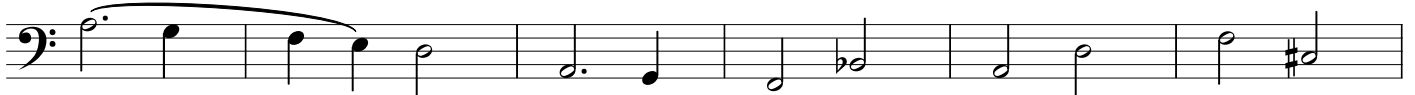
74



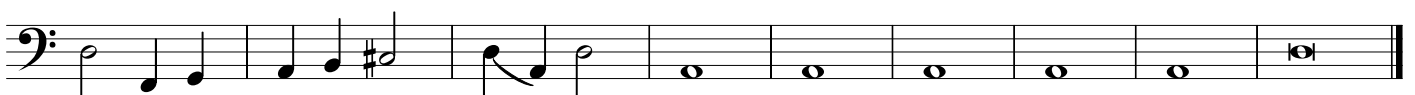
82



89



95



Kyrie ut supra



# Gloria



9



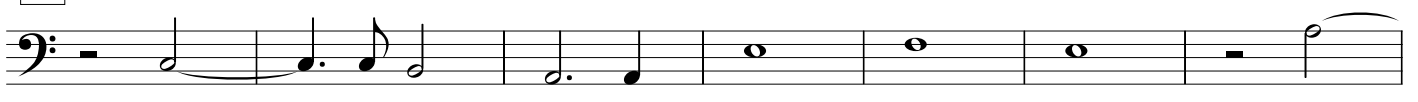
19



25



34



41



47



55



62



69



77



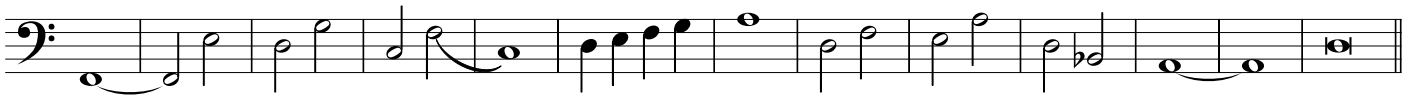
85



95



107



120



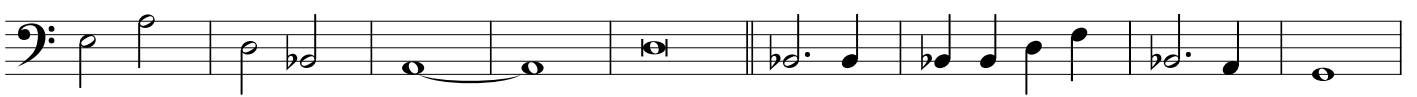
141



153



161



170



183



190



203



209



216



# Credo



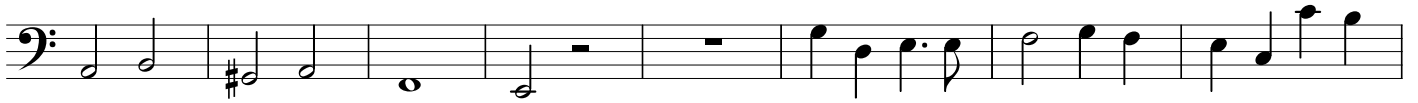
11



20



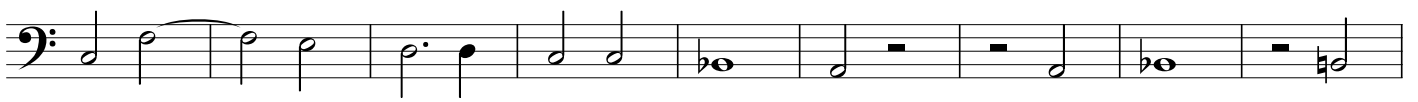
28



36



53



62



70



80



89



100



114



122



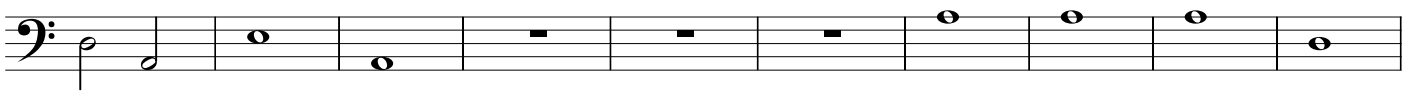
131



145



154



164



173



181



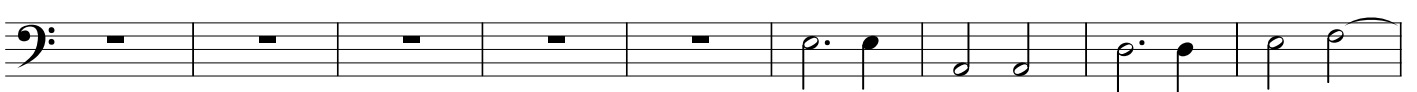
189



197



207

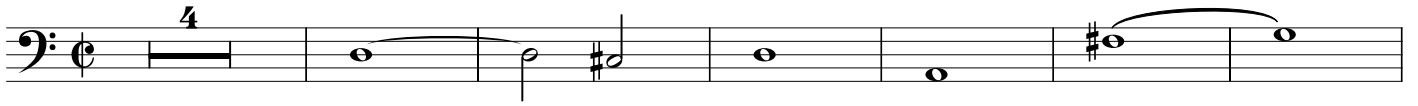


216





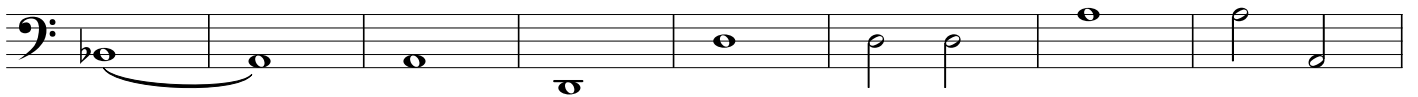
# Sanctus



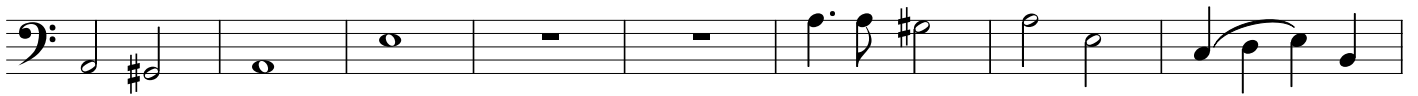
11



20



28



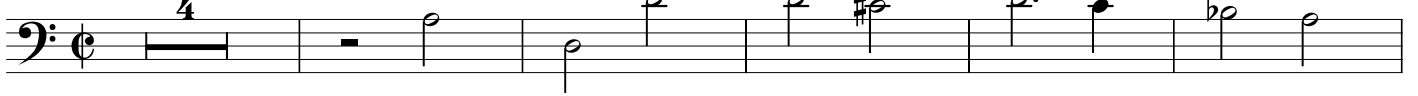
36



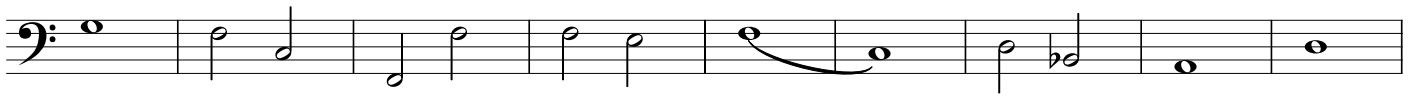
43



52



61



70



76



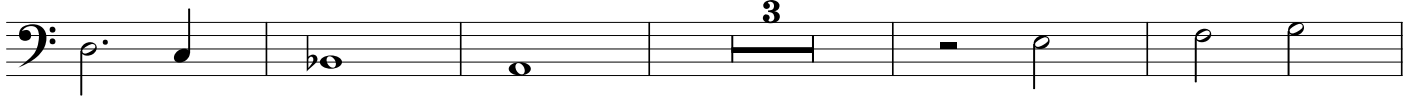
84



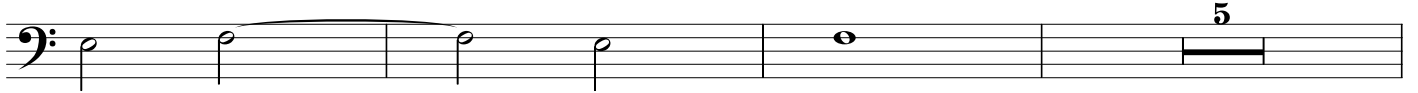
# Agnus Dei



9



17



25



33



40



48



55



61

*Adagio*