

SONATE DA CHIESA

a Violino Solo e Violoncello o Basso Continuo

AMSTERDAM 1708

TOMASO ALBINONI

1671 – 1750

Published by Johan Tufvesson.

Non-commercial copying welcome

Revision : 1.14

Basso

Sonata III

Tomaso Albinoni (1671-1750)

Largo

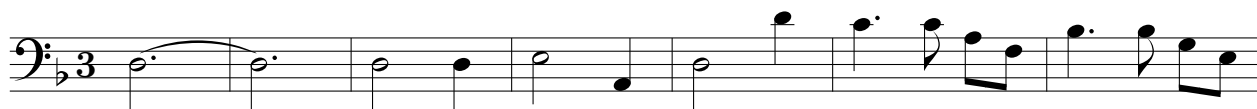
Musical score for the Largo section of Sonata III in G minor by Tomaso Albinoni, Bass part. The score is written in bass clef with a common time signature (C). It consists of four staves of music. The first staff begins with a treble clef and a common time signature. The second staff is marked with a measure rest '4'. The third staff is marked with a measure rest '7'. The fourth staff is marked with a measure rest '10' and a dynamic marking '(p)' below the first measure. The piece concludes with a double bar line.

Allegro

Musical score for the Allegro section of Sonata III in G minor by Tomaso Albinoni, Bass part. The score is written in bass clef with a common time signature (C). It consists of six staves of music. The first staff begins with a treble clef and a common time signature. The second staff is marked with a measure rest '5'. The third staff is marked with a measure rest '9'. The fourth staff is marked with a measure rest '13'. The fifth staff is marked with a measure rest '16'. The sixth staff is marked with a measure rest '19' and a dynamic marking '(p)' below the first measure. The piece concludes with a double bar line.

Adagio

Sonata III Basso



Giga

